

OUT69 TM Motor Protector | Part-No. 52A 240 S10



Application

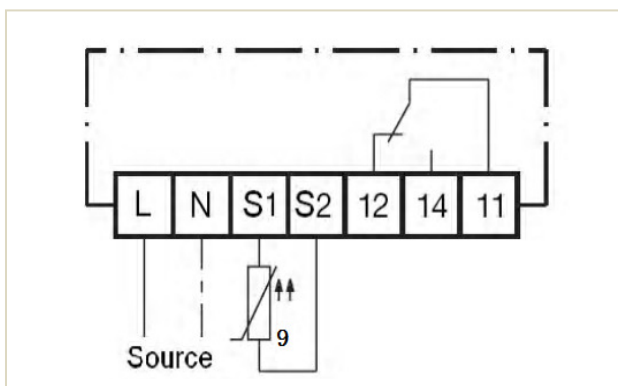
Due to the compact dimensions, OUT69 TM is suitable for mounting into the terminal box of an electric motor. It is characterized by high reliability and availability.

It can be used for compressors, such as FUSHENG ,COPELAND, and REFCOMP, etc.

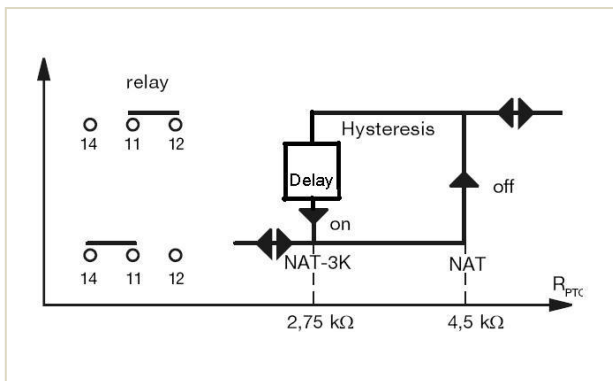
Functional description

OUT69 TM motor protector matches with PTC sensor and is available for all kinds of motor which needs protection, preventing overheating of the electrical machines.

Up to 9 PTC-sensors according to DIN 44081/082 with different nominal response temperatures can be connected in series to the measuring circuit input of OUT69 TM. Hence it is possible to monitor several motor drive units (e.g. motor windings, gear drives, shaft bearings) for thermal overload with only one OUT69 TM motor protector. If the temperature in one of the areas monitored exceeds the nominal response temperature of the respective PTC-sensor, the sensor resistance increases and the OUT69 TM motor protector switches the motor contactor off. After cooling down below the reset threshold, a 5-minute delay period begins. When this period has expired, the module automatically starts to monitor again. The relay switch output is designed as a potential free change-over contact.



Wiring diagram



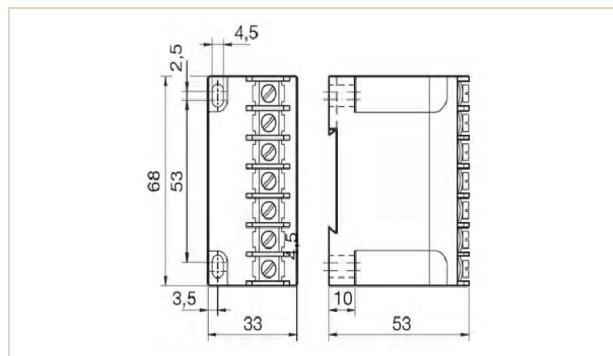
Switching Hysteresis



The unit must be connected by trained electrical personnel.

Technical specifications

Supply voltage	AC50/60Hz 230 ±10% 3VA
Permitted ambient temperature	-30...70°C
Temperature measuring circuits	
-Type	PTC, acc.to DIN44081/082
-Number of sensors	1...9 serial
-R _{25,total}	< 1.8 kΩ
-R _{trip}	4.5 kΩ±20%
-R _{reset}	2.75 kΩ±20%
-Measurement voltage	≤2.5V(acc.to IEC 60034-1)
- Time delay	5min ± 15%
Output relay	Max AC 240V 2.5A C300
AgNi 90/10	Min. AC/DC >24V, >20mA
Mechanical service life	Approx. 1 million switching cycles
Protection class acc. to En 60529	IP00
Connection type	Screw type terminal
Housing material	PA66.glass-fibre-reinforced
Mounting	To snap open to 35mm standard rail as under EN 60715 or screw mounting
Dimensions in mm	53x33x68(LxVxH)
Weight	approx.160g
Order No.	16G08 TM1 01



Dimensions in mm